

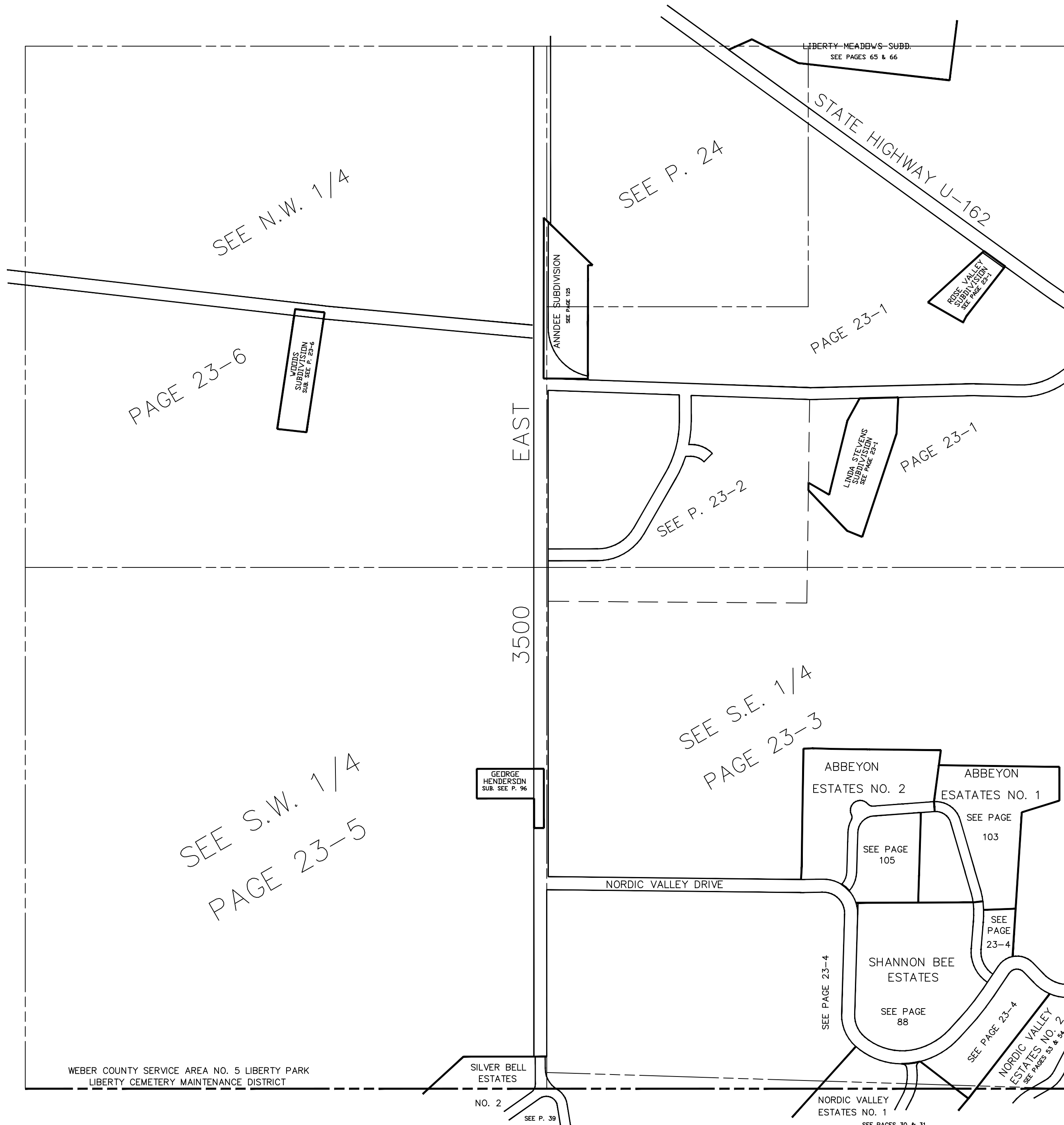
SECTION 29, T.7N., R.1E., S.L.B. & M.

IN WEBER COUNTY

SCALE 1" = 400'

SEE PAGE 14

SEE PAGE 13



SEE PAGE 25

SEE PAGE 22-4

SEE PAGE 22-3

SEE S.W. 1/4  
PAGE 23-5

SEE S.E. 1/4  
PAGE 23-3

SEE N.W. 1/4

SEE P. 24

PAGE 23-6

PAGE 23-1

PAGE 23-1

SEE P. 23-2

SEE PAGE 23-4

SEE PAGE 105

SEE PAGE 103

SEE PAGE 23-4

SEE PAGE 88

SEE PAGE 23-4

NORDIC VALLEY  
ESTATES NO. 2  
SEE PAGES 53 & 54

GEORGE  
HENDERSON  
SUB. SEE P. 96

SILVER BELL  
ESTATES

NO. 2  
SEE P. 39

NORDIC VALLEY  
ESTATES NO. 1  
SEE PAGES 30 & 31

WEBER COUNTY SERVICE AREA NO. 5 LIBERTY PARK  
LIBERTY CEMETERY MAINTENANCE DISTRICT

SEE PAGE 29

SEE PAGE 29